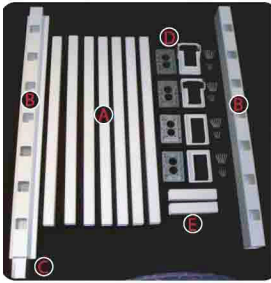
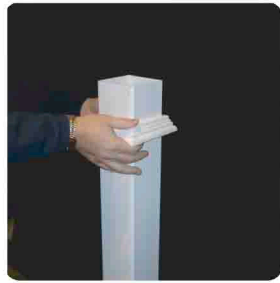


Step-By-Step Instructions for Installing Your QS Pro Stair Railing System



Before beginning your installation make sure you have all the parts shown above.

-  (18) Spindles
-  (2) Pre-routed Rails
-  (1) H-Channel for top rail.
-  (4) Stair Railing Brackets w/screws
-  (2) 8" Spindle Pieces



IMPORTANT: Before beginning, make sure all posts are plumb. If using post base trim, be sure to install prior to railing installation. **We recommend using a 48" post at the end of the stair run.**



Step 1: Lay the bottom rail as close to the stair treads as possible and up against the posts. While maintaining a 33° angle, and making sure to keep the spacing between the spindle hole and the post the same on top and bottom clamp rail to post.



Step 2: Place a spindle in the first and last hole, set top rail and plumb spindles. Clamp top rail to post, using a pencil draw miter lines on top and bottom rail.

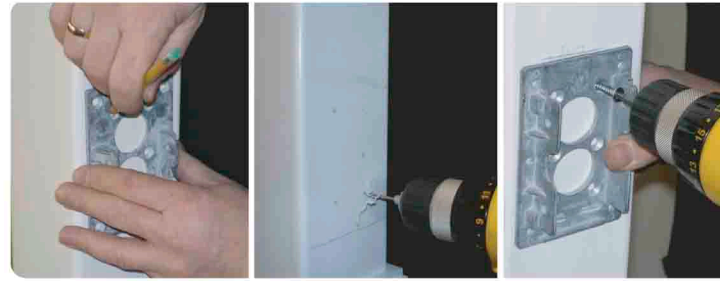
IMPORTANT: The "Z-afety" Stair Brackets are designed to accommodate a 33° angle (+/- 1°). If you require more than a 33° angle use the Z-wedge Stair Adaptor available for Standard and T-rail only. This adaptor will increase your angle (+) 5 degrees.



Step 3: For Standard and T-Rail only, subtract 1/8" per side (1/4" total) to allow space for the bracket base plate. Miter cut both the top and bottom rails equally on both sides.



Step 4: Keeping bottom rail as close to stair treads as possible and maintaining the 33° angle, slide the bracket into position making sure that the bottom edge of the rail is resting on the base plate lip. Mark the position of the base plate and remove bottom rail.



Step 5: Using the base plate as a template mark location of the 6 inside holes and pre-drill for easier application. Attach both base plates using 6-2" stainless steel screws (provided) per bracket. Slide trim pieces onto both ends of the bottom rail. **IMPORTANT:** Make sure to position bracket plate as shown.



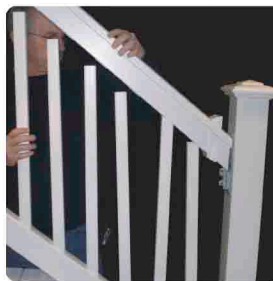
Step 6: Put rail into position, again making sure that the bottom edge of the rail is resting on the base plate lip. Pre-drill and secure rail to each base plate using 4-1" stainless steel screws (provided) per bracket. **IMPORTANT:** Skipping this step will void the warranty.



Step 7: Starting at one end, begin inserting spindles into holes in bottom rail. Feed the top rail down onto spindles.



Step 8: Slide the bracket base plate into position, making sure the rail is seated and mark the position of the base plates. Remove the top rail and repeat Step 5.



Step 9: Slide trim pieces onto both ends of the top rail. With spindles in place reposition top rail by feeding rail down onto spindles. Repeat Step 6 for securing rail to bracket.



Step 10: Place a small bead of glue to the inside rim of the cap and set onto post.



Your QS Pro Stair Railing is now complete. To keep your railing clean, simply spray it down with an ordinary garden hose and mild soap. If neither method gives you satisfactory results, visit www.qsprorailing.com for additional cleaning tips.