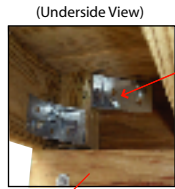
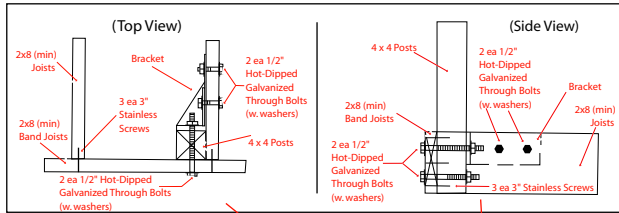




QS Pro Railing System Pre-Planning Guide



Note: Prior to starting, check local building codes for requirements in your area.

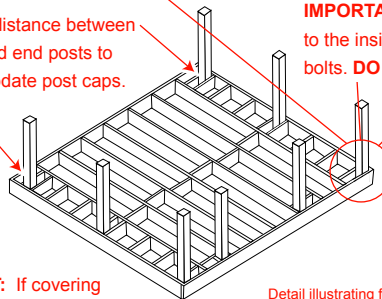


DeckLok® Brackets

Connection detail of rail post to deck support system for vinyl railing systems that utilize a sleeve which slides over a solid-sawn 4 x 4 post.

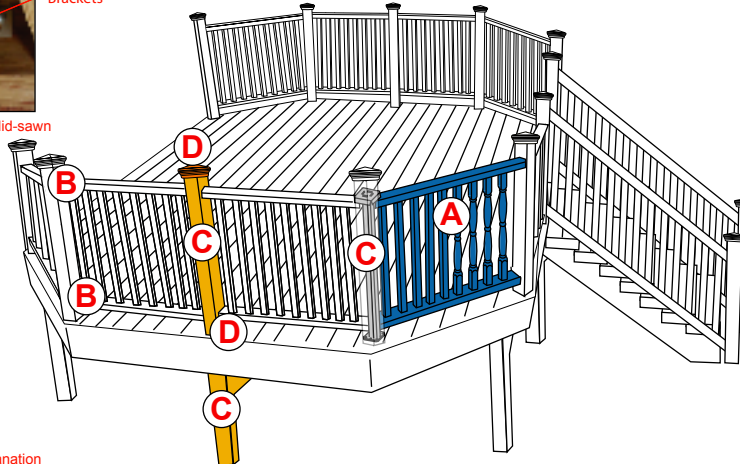
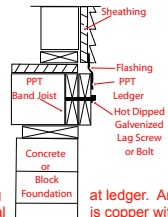
Allow 2" distance between house and end posts to accommodate post caps.

IMPORTANT: Mount wood posts to the inside of rim joists with carriage bolts. **DO NOT NOTCH POSTS.**



IMPORTANT: If covering existing wood posts install post sleeves prior to measuring your railing sections.

Detail illustrating flashing such as "flashing material laminate on deck side" should be provided and a specific product named.



Stainless Steel Screws Provided

100% Zinc Mounting Plates

QS Pro "Z-afety" Bracket System™

Life-Safety

The QS Pro "Z-afety" Bracket System™ is a unique set of railing brackets designed to provide the end user with an aesthetically pleasing appearance while providing a secure attachment between railing and post. In addition, the contractor enjoys the ease of installation and the peace of mind knowing the railing system they installed is safe and secure.

QS Pro "Z-afety" Brackets™ are considered to be one of the strongest brackets available in the industry. One thing is certain, the codes for PVC railing are becoming stricter by the day. The QS Pro "Z-afety" Bracket System™ provides you with the security of knowing your railing is attached with a metal-to-metal connection. The metal insert inside of the railing is attached with stainless steel screws to the zinc mounting plate. Don't reduce the integrity of your vinyl railing system by depending on the performance of a PVC bracket.

S1 2" x 3 1/2" Standard Bracket
 For the installation of a 2" x 3 1/2" rail on either the top and/or bottom of the railing section. This bracket is for level applications only.

T1 T-Rail Bracket
 For installations using "T-rail" on the top railing only. This bracket is for level applications only.

S4 45 Degree Adaptor (self-centering)
 Provides a flat mounting surface for the "Z-afety" bracket when an installation requires a 45 degree angle. There are 2 raised circles in the middle of the adaptor that automatically center the bracket plate and hold the plate to the adaptor for ease of installation. The adaptor is directional, look for the "up" designation on the back of the adaptor,

S5 22.5 Degree Adaptor (self-centering)
 Provides a flat mounting surface for the "Z-afety" bracket when an installation requires a 22.5 degree angle. There are 2 small raised pegs in the middle of the adaptor that automatically center the bracket plate and hold the plate to the adaptor for ease of installation. The adaptor is reversible and doesn't have a designated up or down.

C1 8" Column Adaptor (self-centering)
 Provides a flat mounting surface for the "Z-afety" bracket when a column is the point of railing attachment. Works with either round or fluted 8" diameter columns. There are 2 raised circles in the middle of the adaptor that automatically center the bracket plate. The adaptor is directional, look for the "up" designation on the back of the adaptor.

C

Our post sleeves install over a standard 4 x 4 treated wood post.

- ◆ Stock Dimensions: 4" x 4"
- ◆ Stock Length: 4', 8' & 12'
- ◆ Colors: White, Almond, & Khaki

IMPORTANT: Trim post sleeves no shorter than 40" for a 36" high rail or 46" for a 42" high rail.

Our post sleeves can also be installed over the QS Pro UtiMount.

- ◆ Available for wood or concrete surfaces.
- ◆ Galvanized finish for corrosive environments.
- ◆ Do not use if deck height is over 30."
- ◆ UtiMounts must be installed to manufacturers specifications.

Another option for "disguising" wood posts is our Standard Post Wrap.

1. Attach flat material with PL Premium Construction Adhesive.
2. Snap over flat material or glue in place.

Sizes:
 4" x 4" x 8"
 4" x 4" x 10"
 4" x 6" x 8"
 4" x 6" x 10"
 6" x 6" x 8"
 6" x 6" x 10"

D

Complete your QS Vinyl Railing with our decorative post caps and base.

4" x 4" QS Pro Cap 4" x 4" Pyramid Cap

Solar Low Voltage (available as a kit only)

4" x 4" Accent Light Caps 4" x 4" QS Pro Base

A

- ◆ Conveniently Boxed and Ready to Ship
 - ◆ Easy Field Assembly and Installation
 - ◆ Handrail Styles: Standard & T-Rail
 - ◆ Square or Turned Spindles
 - ◆ Colors: White, Almond, & Khaki
 - ◆ Stock Height: 36" (42" special order only)
 - ◆ Stock Lengths: 4', 6', 8' or 10'
 - ◆ 4 Mounting brackets, 1 center support and hardware included with each rail section
- If splitting sections ask for the "QS Pro Bracket Patcher"™ A kit that includes 4 mounting brackets, 1 center support and all necessary hardware.
- The QS Pro "It's Custom. It's Complete." Program.
- Ask your distributor if they participate in the QS Pro "It's Custom. It's Complete." Program for custom-fit applications.
- ◆ Custom Lengths: 12" to 120"
 - ◆ Pre-Assembled
 - ◆ Easy Installation
- Also available through participating distributors, QS Pro "Designer Series" for attractive railing options.

For the latest updates go to www.qsprorailing.com

If you have any question please call 1-877-649-9896

Note: Pinning of the bracket plate sides to the railing/H-channel is mandatory for a secure installation.