

www.qsprorailing.com

Post Sleeves

Item #	Size	White	Colors
QP4448	4" x 4" x 4'	\$18.30	\$22.14
QP4496	4" x 4" x 8'	\$33.91	\$41.59
QP44144	4" x 4" x 12'	\$49.52	\$61.05
QP6648	6" x 6" x 4'	\$27.56	\$33.00
QP66120	6" x 6" x 10'	\$55.04	\$65.92



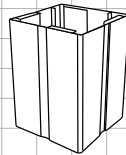
Internal Composite Post

Item #	Size	Price
QPIC4455	4" x 4" x 55 1/2'	\$38.73

Engineered channel through post for quick & simple wiring of low voltage lights.

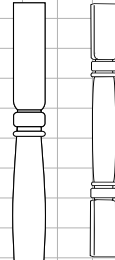
Post Wraps

Item #	Size	White	Colors
QPWA448W	4" x 4" x 8'	\$63.42	\$79.16
QPWA668W	6" x 6" x 8'	\$75.94	\$94.79
QPWA4410W	4" x 4" x 10'	\$78.85	\$ 98.40
QPWA6610W	6" x 6" x 10'	\$94.93	\$118.50



4 x 4 Heritage Newel Post

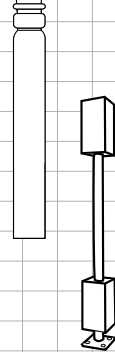
Item #	Size	White	Colors
QHNP4454	4" x 4" 54"	\$61.12	\$70.69



Heritage Structural Porch Post*

Item #	Size	White	Colors
QHSP4104	4" x 4" x 104"	\$185.72	\$207.85
QHSP5104	5" x 5" x 104"	\$199.09	\$228.93

*Almond color not an exact match with the QS Pro Railing. Call Customer Service for a color sample.

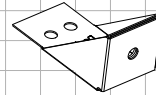


Post Mount

Item #	Size	Price
QPROMOUNT42-HDW	4" x 4" x 42"	\$85.01
UltiMount System-wood applications		
QPROMOUNT42-HDC	4" x 4" x 42"	\$71.82
UltiMount System-concrete applications		

DeckLok Bracket

Item #	Description	Price
QDLHDG	Hot Dipped Galvanized	\$10.65
QDLSS	Stainless Steel	\$25.53



Decorative Post Caps

Item #	Size	White	Colors
QCAP4PC	4" x 4"	\$ 1.68	\$1.81
QCAP4PRO	4" X 4"	\$ 4.56	\$4.96
QCAP6PC	6" X 6"	\$ 5.99	\$6.86
QCAP6CLC	6" X 6"	\$10.49	\$12.03



Solar Post Cap Lights

Item #	Size	White	Colors
QLZ45 (Light only)	4" x 4"	\$40.60	\$42.62

Low Voltage Post Cap Lights

Item #	Size	White	Colors
QLV45KIT (Kit)	4" x 4"	\$303.04	\$303.04
QLV45W (Light only)	4" x 4"	\$ 22.65	\$ 23.79

QLV45KIT includes 6 - lights, 125' wire, 1 - transformer and 1 - receptacle cover

Decorative Post Base

Item #	Size	White	Colors
QBA4CLB	4" x 4"	\$ 2.14	\$ 2.31
QBA6CLB	6" X 6"	\$ 6.38	\$ 7.31
QBA46AB	4" to 5" to 6"	\$12.61	\$13.82



NOTE: Add suffix to Item # to designate color (W - White, A - Almond, K - Khaki)